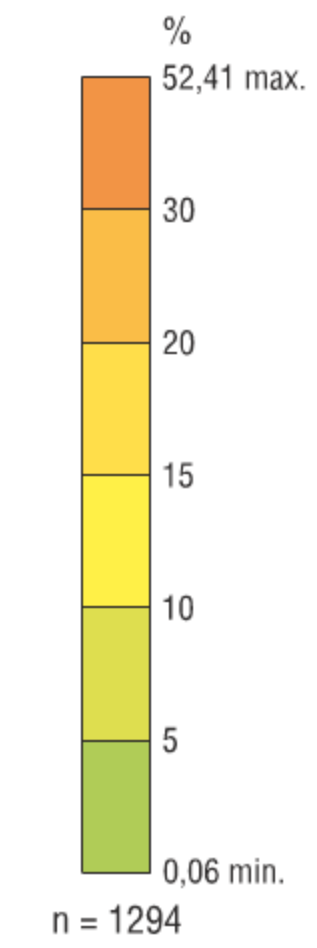
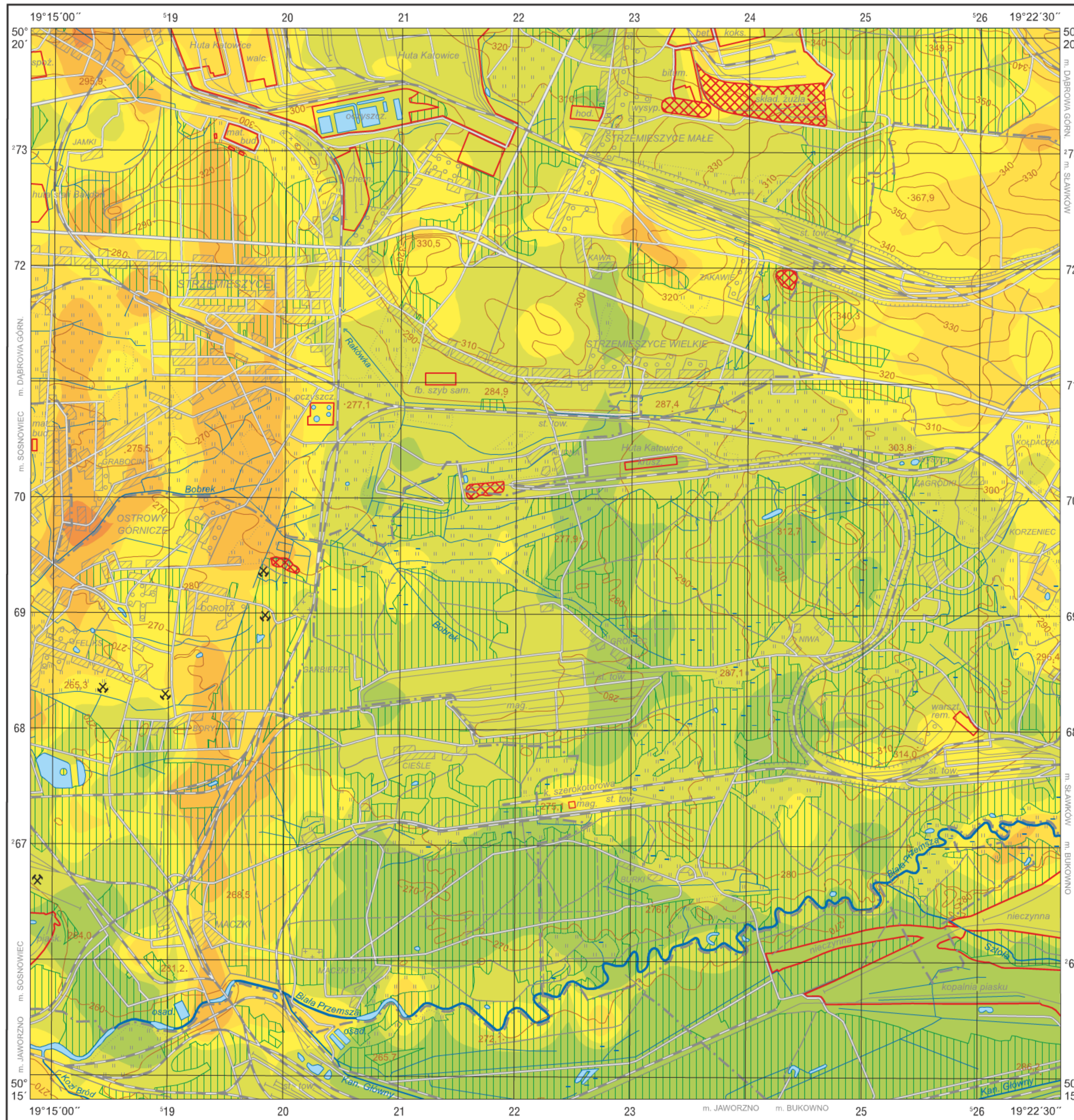


Silt fraction (0.1–0.02 mm) in topsoil (0.0–0.3 m)

M-34-63-B-a STRZEMIESZYCE



Objaśnienia niektórych znaków topograficznych
Explanation of some topographic signs

- Lasy
Forests
- Obszary przemysłowe
Industrial areas
- Hałdy
Dumps
- Szyby górnicze
Mining shafts
 - czynne
active
 - nieczynne
inactive
- Osadniki
Settling ponds