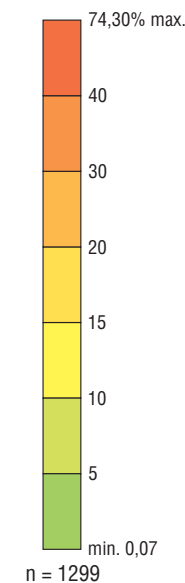
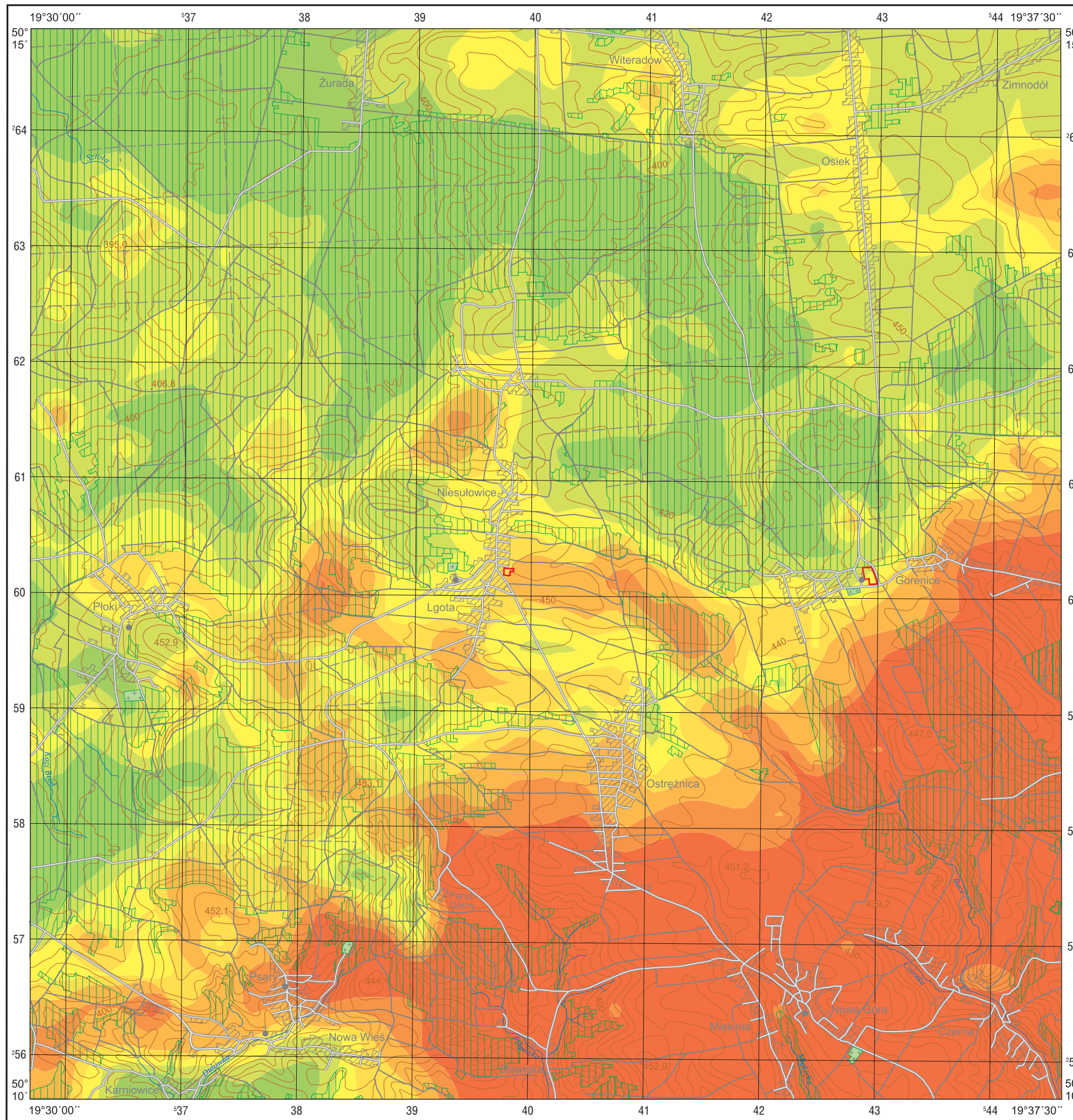




Zawartość frakcji pylastej (0,1–0,02 mm) w glebach (0,0–0,3 m)

Silt fraction (0.1–0.02 mm) in topsoil (0.0–0.3 m)

M-34-64-A-c NOWA GÓRA



Objaśnienia niektórych znaków topograficznych  
Explanation of some topographic signs

-  Lasy  
Forests
-  Obiekty przemysłowe  
Industrial objects