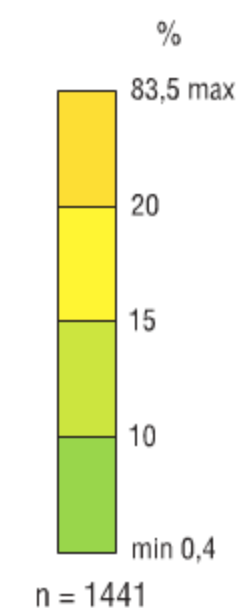
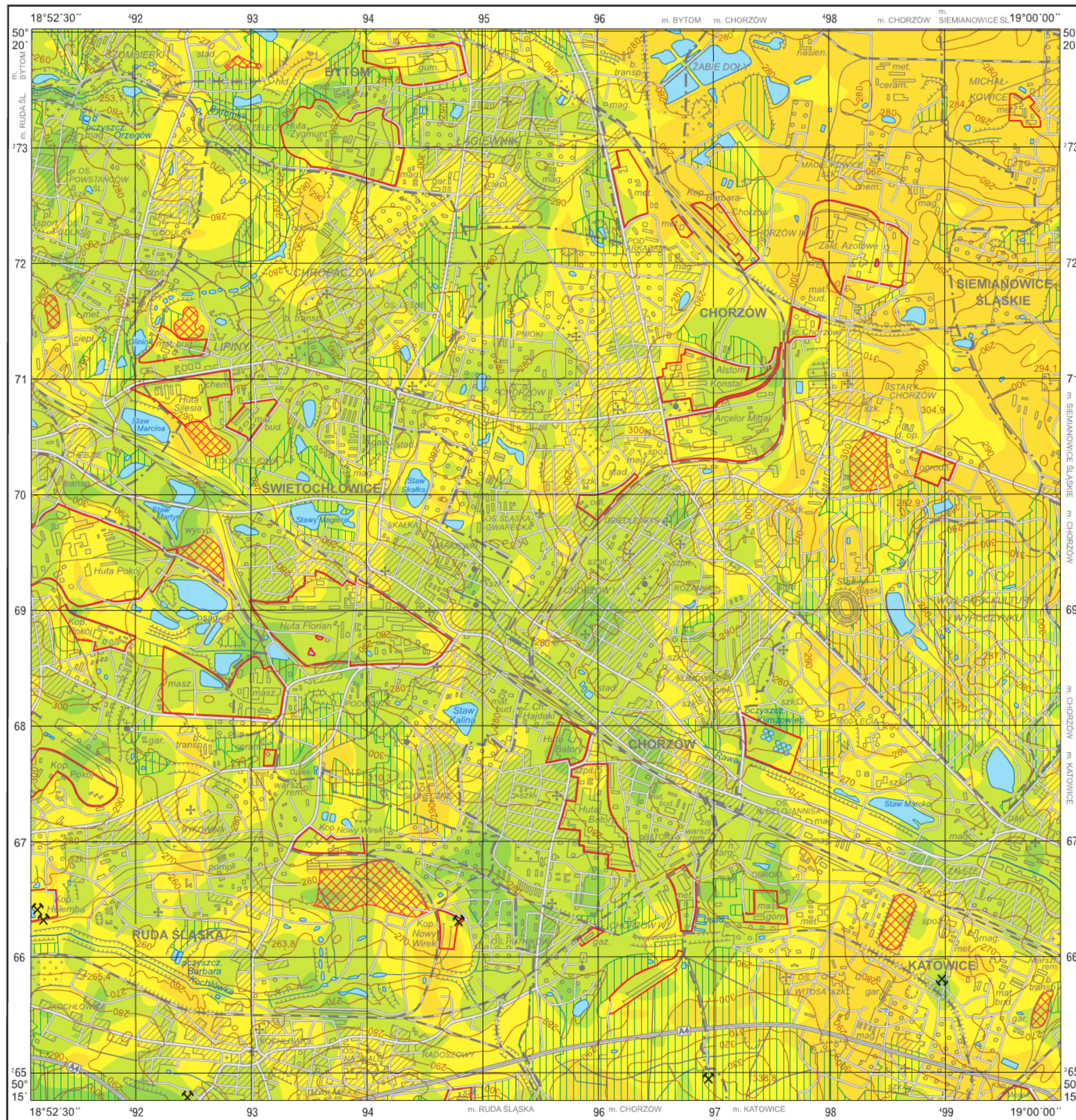






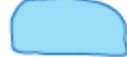
Zawartość frakcji ilowej (<0,02 mm) w glebach (0,0–0,3 m)

Clay fraction (<0.02 mm) in topsoil (0.0–0.3 m)

M-34-62-B-b CHORZÓW



Objaśnienia niektórych znaków topograficznych Explanation of some topographic signs

-  Lasy
Forests
-  Obszary przemysłowe
Industrial areas
-  Hałdy
Dumps
- Szyby górnicze
Mining shafts
 -  czynne
active
 -  nieczynne
inactive
-  Osadniki i zbiorniki pogórnictwa
Settling ponds and post-mining lakes