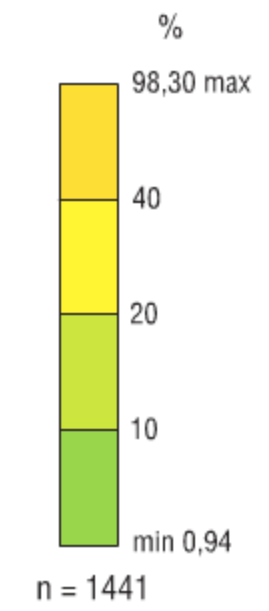
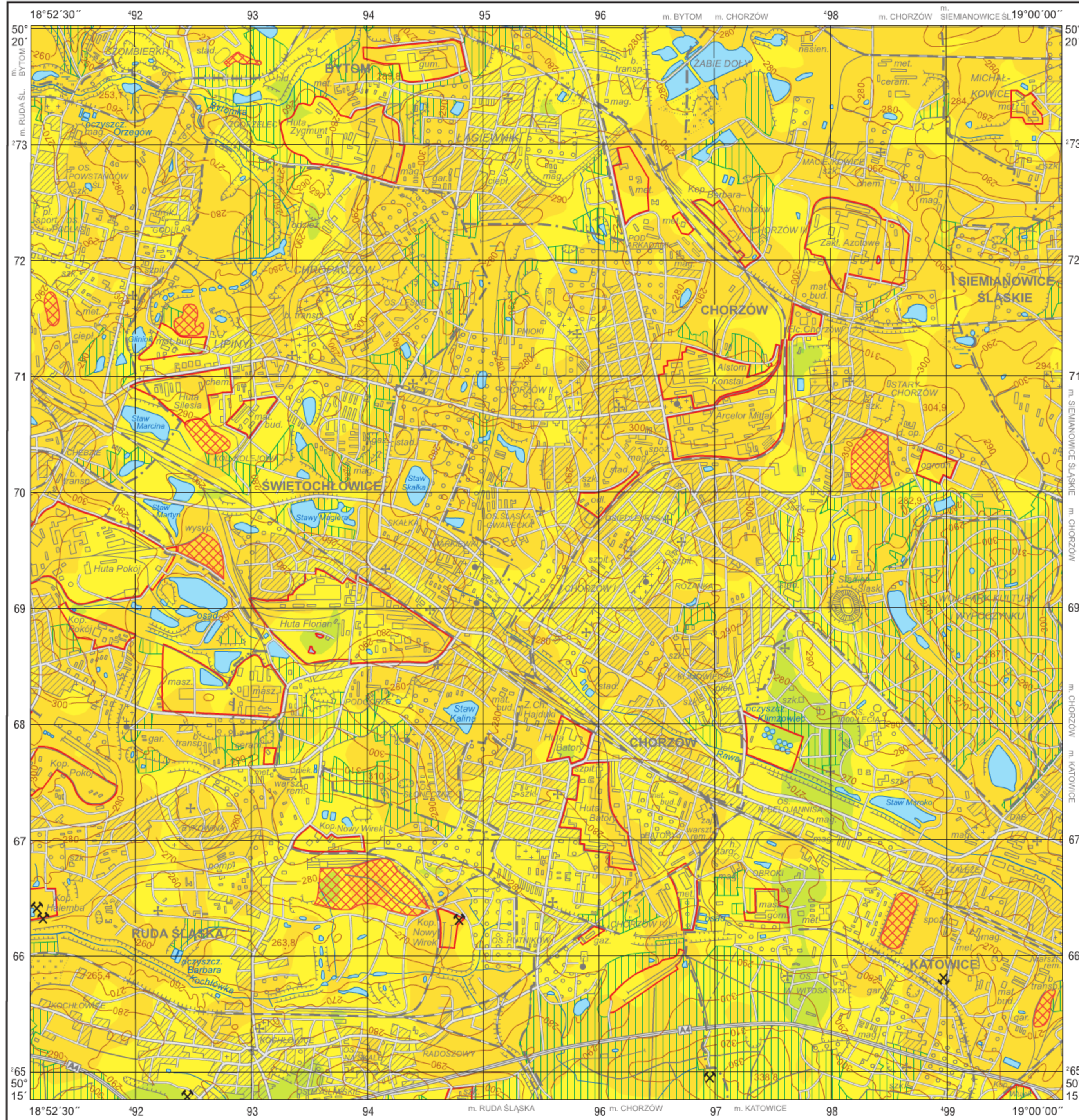








Zawartość frakcji pyłowej (0,1–0,02 mm) w glebach (0,0–0,3 m)

Silt fraction (0.1–0.02 mm) in topsoil (0.0–0.3 m)

M-34-62-B-b CHORZÓW



Objaśnienia niektórych znaków topograficznych Explanation of some topographic signs

-  Lasy
Forests
-  Obszary przemysłowe
Industrial areas
-  Hałdy
Dumps
-  Szyby górnicze
Mining shafts
-  czynne
active
-  nieczynne
inactive
-  Osadniki i zbiorniki pogórnice
Settling ponds and post-mining lakes