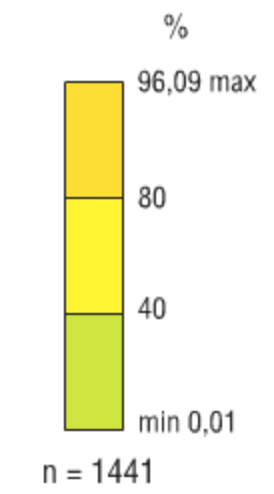
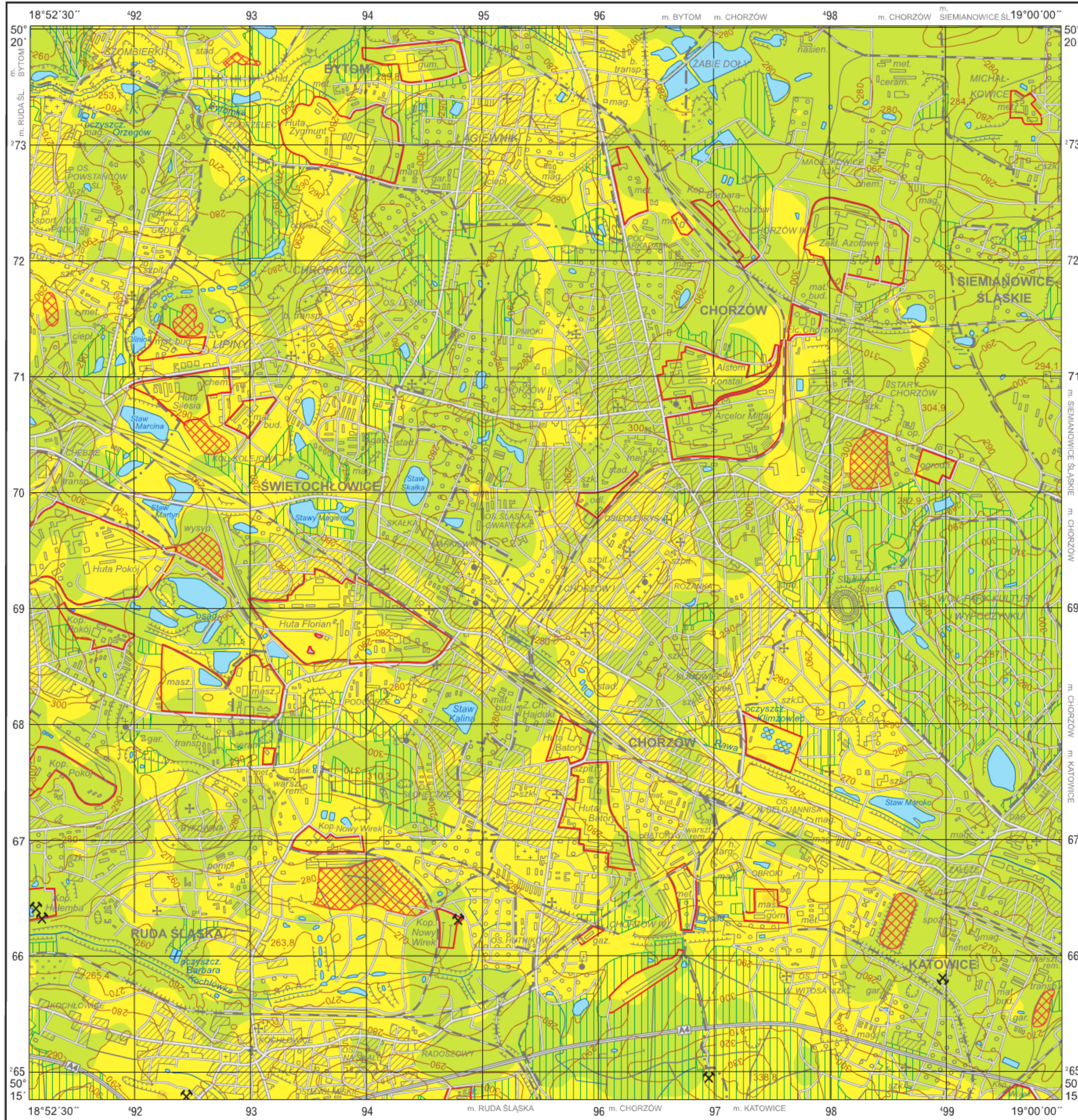









# Zawartość frakcji piaskowej (1,0–0,1 mm) w glebach (0,0–0,3 m)

## Sand fraction (1.0–0.1 mm) in topsoil (0.0–0.3 m)

M-34-62-B-b CHORZÓW



### Objaśnienia niektórych znaków topograficznych Explanation of some topographic signs

-  Lasy  
Forests
-  Obszary przemysłowe  
Industrial areas
-  Hałdy  
Dumps
-  Szyby górnicze  
Mining shafts
-  czynne  
active
-  nieczynne  
inactive
-  Osadniki i zbiorniki pogórnice  
Settling ponds and post-mining lakes

